



Toll Free: 1-800-579-8088 Web: www.zinko.co

MODEL

ZPJ-850C

0.85 Ton Panta Graph Jack

Operating Instructions & Repair Parts List

Operation

The owner and/or operator shall have an understanding of these operating instructions and warnings before operating the jack. Warning information shall be emphasized and understood. If the operator is not fluent in English, the instructions and warning shall be read to and discussed with the operator in the operator's native language by the purchaser/owner, making sure that the operator comprehends its contents.

Operator Responsibility

It is the operator's responsibility to read and understand all of the following safety statements:

WARNING

1. This jack is designed for use **ONLY** on hard, horizontal, level surfaces capable of sustaining the load. Use on other than hard, level surfaces may result in jack instability and possible loss of load.
2. Immediately after jacking, **support vehicle (load) with appropriately rated stands or equivalent blocking.**
3. **DO NOT allow jack alone to support vehicle (load).**
4. **DO NOT overload this jack beyond its rated capacity.**
5. The following restrictions apply during jack operation:
 - a) Use the attached handle as instructed, **DO NOT** replace with other handle or extended handle.
 - b) Operating power under 44 lbs. **DO NOT pump by foot.**
 - c) **DO NOT** put finger between the up and low frame of the jack to prevent finger injury.
 - d) Use the handle tip to turn release valve. **DO NOT turn valve more than 3 times.**
 - e) Stop operating this jack when lifted up to the **STOP LINE.**
6. Use handle for lowering or removing the jack from vehicle. **DO NOT** touch jack by finger to prevent finger injury.
7. Fill with clean hydraulic jack oil only. **NEVER USE BRAKE OR SHOCK ABSORBER FLUID.**
8. This jack is to be used for **VEHICLE LIFTING ONLY.**

Inspection

1. Visual inspection shall be made before each use of the jack, checking for leaking hydraulic fluid, frame and damages, and loose or missing parts.
2. Each jack shall be inspected by an authorized **ZINKO** service facility immediately if subjected to an abnormal load or shock.
3. Owners and/or users should be aware that repair of this equipment may require specialized knowledge and facilities. It is recommended that an annual inspection of the jack be made by an authorized **ZINKO** service facility and that any defective parts, decals or warning labels be replaced with genuine **ZINKO** parts. A list of authorized service facilities is available from **ZINKO**.

Operating Instructions (Before Use)

1. Use on vehicle weight 1,600 lbs. and under on hard, horizontal level surface.
2. Preparations before use:
 - a) Vehicle's manual or foot brake must be on.
 - b) Transmission swift gear is in park position.
 - c) Put tire blocks on the opposite side of the tire that is going to be changed.
 - d) Take spare tire out, and put it near the jack and the tire needed to be replaced.
3. When lifting up the vehicle, make sure the saddle is vertically against the vehicle.
4. **DO NOT** lift the jack higher than the **STOP LINE.**
5. During lifting, **DO NOT GET UNDERNEATH THE VEHICLE, or put more force on the vehicle.**
6. Read the operating instructions and warning before operating the jack.

Operating Instructions

Raising the Jack

1. Position the jack on a hard and flat surface, and be sure that the load is centered on the saddle.
2. Use handle to turn the release assembly clockwise to close the release valve.
3. Insert handle into the handle socket and pump until desired height is reached, **but not over the STOP LINE.**

Lowering the Jack

1. Use handle, **SLOWLY** turn release assembly counterclockwise. **NOTE: It is dangerous to fully open release assembly, it may cause sudden drop of vehicle.**
2. When lowering the jack, **DO NOT** put fingers in between the up-and-down steel frame to prevent finger injury.
3. Use foot step or handle to push the jack down for safe operation.

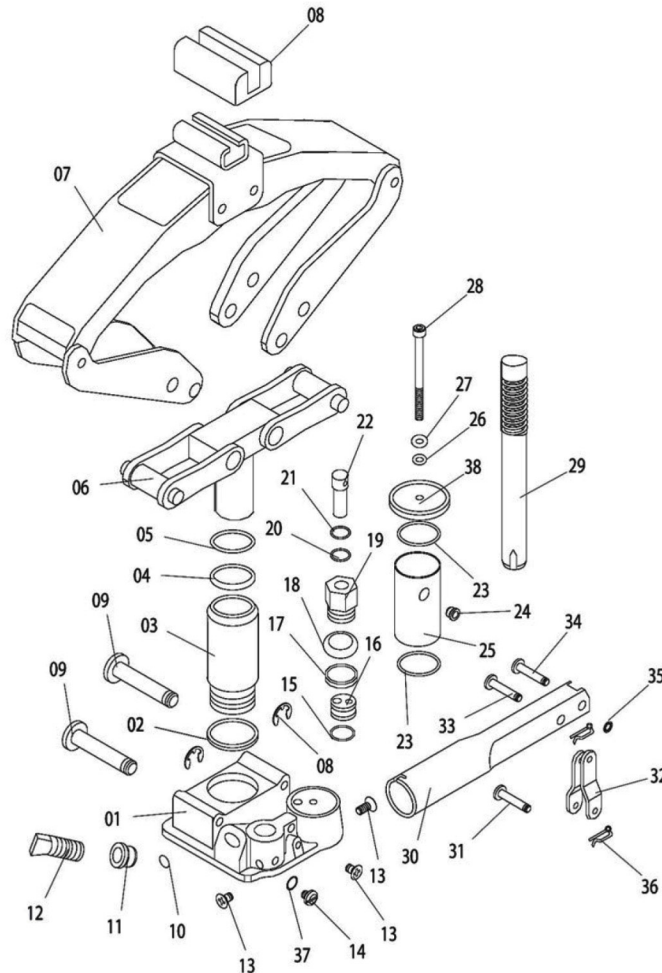
Zinko Hydraulic Jack

Model: ZPJ-850C

Inspection

1. When jack is not in use, keep the ram completely retracted and the release valve closed.
2. Keep the jack clean. Occasionally lubricate the handle socket pivot point, and release screw thread to prevent corrosion.
3. Frequently check oil level.

Parts Breakdown



#	Description
1	Base
2	Backup Ring
3	Cylinder
4	Oil Seal
5	Backup Ring
6	Link Rod
7	Raise Arms
8	Foot Plate
9	Socket Bolt
10	Steel Ball
11	Oil Seal
12	Release Valve Spindle
13	Filler Screw

#	Description
14	Filler Screw
15	Aluminum Washer
16	Valve
17	Oil Seal
18	Cup Washer
19	Pump Cylinder
20	Oil Seal
21	Backup Ring
22	Piston
23	Oil Seal
24	Oil Plug
25	Oil Seal
26	Oil Seal

#	Description
27	Plain Washer
28	Hex Bolt
29	Handle Set
30	Handle Socket Assy
31	Socket Blot
32	Handle Socket Assy
33	Socket Blot
34	Socket Blot
35	Nut Housing
36	R-Pin
37	Oil Seal
38	Reservoir End Cup

Zinko Hydraulic Jack

Model: **ZPJ-850C**

Troubleshooting

Problem	Cause	Solution
Will Not Lift	Valve may not be closing properly.	Use handle, turn release ass'y clockwise to close the release valve.
Will Not Lift to Full Height	The jack could be low on oil.	Check oil level, and fill reservoir with clean hydraulic jack oil.
Will Not Lower Completely	Valve may not be open.	Use handle, SLOWLY turn release ass'y counterclockwise to open release valve.
Pump Feels "Spongy" Under Load	The jack could be low on oil.	Check oil level, and fill reservoir with clean hydraulic jack oil.
	The jack could be "air-bound".	Open the release valve one full turn and pump the handle vigorously. Close the release valve and pump it to full height. Continue pumping several times at full height. Open release valve and push ram down.

If the above procedures do not correct the problem, contact your nearest **ZINKO** service facility. When submitting any jack or equipment to be repaired, be sure to state the nature of the problem and indicate whether an estimate of the repair cost is needed.



ZINKO HYDRAULIC JACK

PO Box 4903, Ontario, CA 91761

Toll Free: 1-800-579-8088

www.zinkojack.com

Phone: (909) 230-4100

Fax: (909) 230-4137